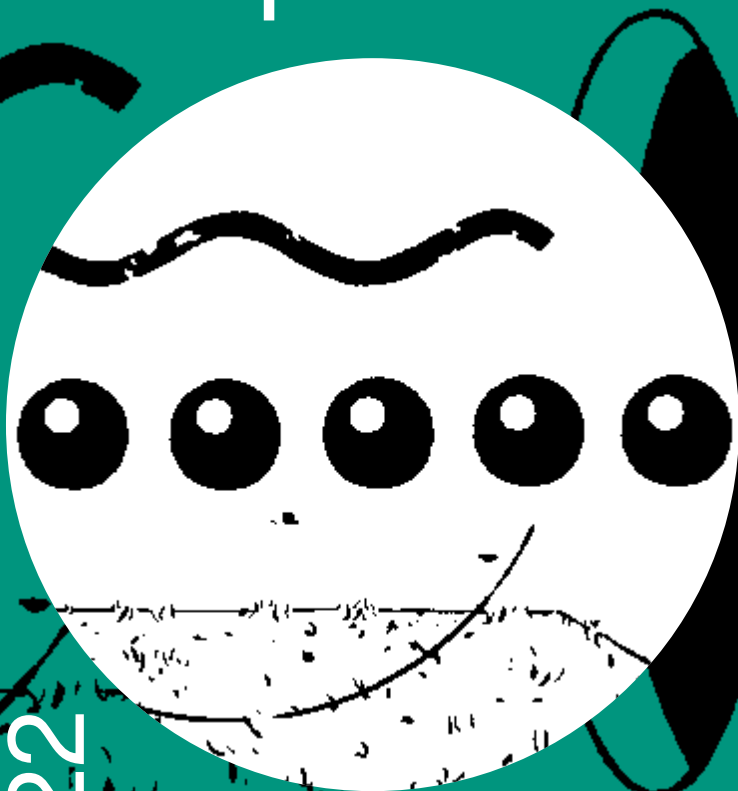


Anthropocene Campus



Nov. 14-22

Das Anthropozän-Projekt ²⁰¹³/₂₀₁₄

HKW

Haus der Kulturen der Welt

Anthropocene Curriculum & Anthropocene Campus

How does the Anthropocene change our approach to the world? How does a new, “Earthbound” knowledge emerge, what knowledge is relevant? How should the institutions and techniques be structured where such knowledge is to be generated and transmitted?

Today’s rapid global transformation requires thinking beyond institutionalized disciplines, educational formats, and teaching content. In a two-year transdisciplinary collaboration, researchers and university teachers from around the world have developed an ANTHROPOCENE CURRICULUM, an exemplary program that opens up new fields of knowledge and seeks to respond to the challenges of the “Age of Humanity.”

During the ANTHROPOCENE CAMPUS, this curriculum will be put into teaching practice for the first time with a group of 100 young academics, artists, and cultural theorists. Public presentations of specific case studies, artistic positions, and a discussion forum, with representatives from the fields of education, policy, and research, will open up the Campus to broader public debate on the content and forms of teaching and learning in the Anthropocene.



Wie verändert das Anthropozän unsere wissenschaftlichen Zugänge zur Welt? Wie entsteht neues, »erdverbundenes« Wissen, welches Wissen ist relevant? Wie müssen die Orte und Verfahren beschaffen sein, in denen solches Wissen generiert und weitergegeben werden kann?

Der rapide globale Wandel erfordert ein Denken außerhalb von institutionalisierten disziplinären Zuständigkeitsbereichen, Bildungsformaten und Lehrinhalten. In transdisziplinärer Kollaboration haben internationale Forscher und Lehrende ein ANTHROPOCENE CURRICULUM entworfen; den exemplarischen Versuch eines Lehrprogramms, das neue Wissensfelder erschließen und auf die Herausforderungen des »Menschenzeitalters« antworten soll.

Während des ANTHROPOCENE CAMPUS wird dieses Curriculum mit einer Gruppe von 100 ausgewählten Nachwuchswissenschaftlern, Künstlern und Kulturschaffenden erstmals erprobt. Öffentliche Präsentationen konkreter Fallstudien, künstlerische Positionen und ein Diskussionsforum mit weiteren Akteuren aus Bildung, Politik und Forschung öffnen den Campus für eine gesellschaftliche Debatte über Inhalte und Formen des Lehrens und Lernens im Anthropozän.

Participants

Marco Armiero, environmental historian and political ecologist, Royal Institute of Technology, Stockholm

Amita Baviskar, sociologist, Institute of Economic Growth, Delhi

Elena Bogleux, cultural anthropologist, University of Bergamo

Arno Brandlhuber, architect, Berlin / Akademie der Bildenden Künste, Nürnberg

Roman Brinzanik, physicist, computational biologist, and author, Max Planck Institute for Molecular Genetics, Berlin

Miriam Diamond, environmental scientist and chemist, University of Toronto

Paul N. Edwards, historian of information technology and climate science, University of Michigan

Erle Ellis, landscape ecologist, University of Maryland, Baltimore County

Regine Hengge, microbiologist, Humboldt-Universität zu Berlin

Sabine Höhler, physicist and historian of science, technology, and environment, Royal Institute of Technology, Stockholm

Pablo Jensen, physicist, Institut rhône-alpin des systèmes complexes (IXXI), Lyon

Natalie Jeremijenko, artist, natural scientist, and experimental designer, New York University

Maya Kóvskaya, political and cultural theorist, art critic, and curator, Delhi / Beijing

Christoph Küffer, plant ecologist, ETH Zurich

Adrian Lahoud, architect and historian of urban design, The Bartlett, University College London

Manfred D. Laubichler, biologist and historian of science, Arizona State University

Mark Lawrence, atmospheric scientist, Institute for Advanced Sustainability Studies (IASS), Potsdam

Reinhold Leinfelder, geologist, Freie Universität Berlin / Rachel Carson Center for Environment and Society (RCC), Munich / Haus der Zukunft, Berlin

Armin Linke, artist, photographer, and filmmaker, Berlin

Wolfgang Lucht, physicist and Earth system scientist, Potsdam Institute for Climate Impact Research (PIK) / Humboldt-Universität zu Berlin

Tadzio Müller, climate justice expert, Rosa-Luxemburg-Stiftung, Berlin

Ioan Negrutiu, biologist, Institut Michel Serres, École normale supérieure de Lyon

Philipp Oswald, architect, architecture and design theorist, and writer, Universität Kassel

The Otolith Group, artist collective, founded by Anjalika Sagar and Kodwo Eshun, London

Matteo Pasquinelli, philosopher and media theorist, Berlin

Andrew Pickering, science and technology studies, University of Exeter

Armin Reller, resource strategist, Universität Augsburg

Jürgen Renn, physicist and science historian, Max Planck Institute for the History of Science/ Humboldt-Universität und Freie Universität Berlin

Libby Robin, historian of science and environment, Royal Institute of Technology, Stockholm

Wolfgang Schäffner, historian of media technologies, Humboldt-Universität zu Berlin / Universidad de Buenos Aires

Bernd Scherer, philosopher and director of Haus der Kulturen der Welt, Berlin

Emily Eliza Scott, interdisciplinary scholar and artist, ETH Zurich

Jorg Sieweke, landscape architect and urbanist, University of Virginia/ HCU Hamburg /director of ParadoXcity

Bryndís Snæbjörnsdóttir, artist, Icelandic Academy of the Arts, Reykjavik

Sverker Sörlin, environmental historian, Royal Institute of Technology, Stockholm

Will Steffen, Earth system scientist, Australian National University (ANU), Canberra / Stockholm Resilience Centre

Bronislaw Szerszynski, sociologist, Lancaster University

Territorial Agency, John Palmesino and Ann-Sofi Rönnskog, architects and urbanists, London

Zev Trachtenberg, social and political philosopher, University of Oklahoma

Helmuth Trischler, historian of science and technology, Deutsches Museum/ Ludwig-Maximilians-Universität / Rachel Carson Center for Environment and Society (RCC), Munich

Stella Veciana, artistic researcher, Federation of German Scientists, Berlin

Caleb Waldorf, artist, Berlin

Eyal Weizman, architect and visual cultures theorist, Goldsmiths, University of London / Princeton University

Pinar Yoldas, cross-disciplinary artist and researcher, Duke University, Durham, North Carolina

Jan Zalasiewicz, geologist, University of Leicester / Chair, Anthropocene Working Group

November 14+15, 2014

Opening: Anthropocene Campus

The ANTHROPOCENE CAMPUS starts with presentations of concrete cases along three topical clusters: from the medial and scientific representations of the Anthropocene (*Representing*); the correlations between environmental conditions, society, and technological development (*Connecting*); to the sociopolitical impacts of the “Age of Humanity” (*Claiming*). **Der ANTHROPOCENE CAMPUS startet mit Präsentationen konkreter Fallbeispiele in drei thematischen Clustern: von den medialen und wissenschaftlichen Repräsentationsformen des Anthropozäns (*Representing*) über die Wechselbeziehungen zwischen Umweltbedingungen, Gesellschaft und technologischer Entwicklung (*Connecting*) zu den sozio-politischen Auswirkungen des »Menschenzeitalters« (*Claiming*).**

Friday, November 14

4.30–5pm Welcome

Bernd Scherer (Haus der Kulturen der Welt, Berlin), Jürgen Renn (Max-Planck-Institut für Wissenschaftsgeschichte, Berlin)

5–8pm Representing

PRESENTATIONS & DISCUSSION · Libby Robin, Helmuth Trischler, Wolfgang Lucht, Philipp Oswald, Paul Edwards

Which images, media, and models are able to develop scenarios in order to grasp the Anthropocene in its historical depth, its cultural shadows, and complex interrelations? **Mit welchen Bildern, Medien und Modellen lassen sich Szenarien entwerfen, die das Anthropozän in seiner historischen Tiefe, seinen kulturellen Schattierungen und komplexen Zusammenhängen erfassen?**

Saturday, November 15

11am–2pm Connecting

PRESENTATIONS AND DISCUSSION · Bronislaw Szerszynski, Sabine Höhler, Ioan Negrutiu, Jürgen Renn, Manfred Laubichler, Armin Reller

The interactions between Earth and humanity, models of evaluation and environmental change, and social and technological developments require new combinations of knowledge skills. **Die Wechselwirkungen zwischen Erde und Mensch, Bewertungsmodellen und Umweltveränderungen, gesellschaftlicher und technologischer Entwicklung erfordern neue Kombinationen von Wissensfertigkeiten.**



Saturday, November 15
3–6pm Claiming

PRESENTATIONS AND DISCUSSION · Adrian Lahoud, Marco Armiero, Will Steffen, Elena Bougleux, Erle Ellis, Arno Brandhuber

What measures can be taken to co-shape the Anthropocene – with all its “geo-political” consequences – by interlinking global dimensions and local interest, the individual and the collective perspective?

Mit welchen Maßnahmen lässt sich das Anthropozän mitsamt seiner »geo-politischen« Folgen in der Verschränkung von globalem Maßstab und lokalen Interessen, individueller und kollektiver Perspektive gemeinsam gestalten?

6.30–8pm
Anthropocene Observatory
– The Dark Abyss of Time

LECTURE · Territorial Agency (John Palmesino and Ann-Sofi Rönnskog) and Armin Linke

On the relationship between abstract models and concrete areas of knowledge production.

Zur Beziehung zwischen abstrakten Modellen und konkreten Orten der Wissensproduktion

Monday, November 17
8–9.30pm

An Ecosystem of Excess

PRESENTATION AND ART & SCIENCE TALK · Pinar Yoldas and Regine Hengge

On the wondrous effects of bacteria images and the posthuman plastic soup. Über die wunderbaren Effekte von Bakterien-Bildern und die post-humane Plastiksuppe

In cooperation with the Ernst Schering Foundation

Wednesday, November 19
8–9.30pm

The Otolith Group

PRESENTATION AND ARTIST TALK · Kodwo Eshun and Anjalika Sagar

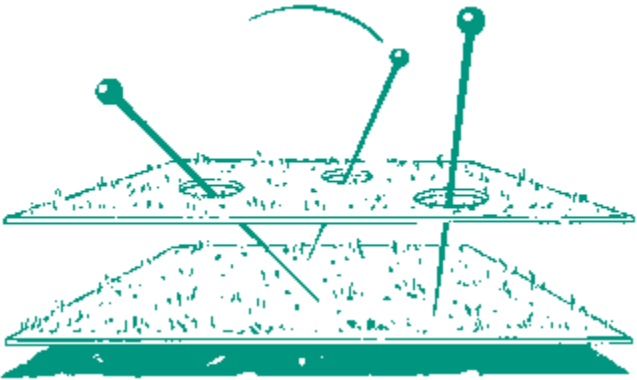
An essay film on the “seismic psyche” of earthquake endangered California. Ein Essay-Film zur »seismischen Psyche« des erdbebengefährdeten Kaliforniens

November 21+ 22, 2014

Earthbound Knowledge: A Forum

Co-Producing a Curriculum for the Anthropocene

A situation open for further negotiation: what conclusions can be drawn regarding the relevance, focal points, methods, and general conditions of an “Earth-bound” knowledge and its mediation? **Eine offene Verhandlungssituation: Welche Schlüsse lassen sich zu Relevanz, inhaltlichen Schwerpunkten, Methoden und Rahmenbedingungen von »erdverbundenem« Wissen und seiner Vermittlung ziehen?**



Friday, November 21

8–10pm Earthbound Knowledge: A Forum I

INTRODUCTION, TABLE TALKS, DISCUSSION · Up for debate are: access to knowledge, its application and public organization, its preconditions and experiential foundations; but also the necessity of a responsible approach to uncertainties.

Zur Debatte stehen der Zugang zu Wissen, seine Anwendung und öffentliche Organisation: Vorbedingungen, Erfahrungsgrundlagen und Grenzen von Wissen, aber auch die Notwendigkeit eines verantwortungsbewussten Umgangs mit Ungewissheiten.

INTRODUCTION: Jürgen Renn

TABLE TALK A: Public Knowledge
Amita Baviskar and guest

TABLE TALK B: Limits of Knowledge
Wolfgang Lucht and guest

TABLE TALK C: Experience as Knowledge · Natalie Jeremijenko and Andrew Pickering



Saturday, November 22

11am–4pm Earthbound Knowledge: A Forum II

HEARINGS · Discussions of the main topics of the curriculum: can key terms such as complexity, scales, experimentation, or global ethics do justice to multifaceted forms of knowledge? How can productive interconnections be established? [Verhandlungen zu den Leitthemen des Curriculums: Werden Schlüsselbegriffe wie Komplexität, Skalierung, Experiment oder globale Ethik der Vielgestalt der Wissensformen gerecht? Wie lassen sich produktive Querverbindungen herstellen?](#)

Marco Armiero, Amita Baviskar, Elena Bougleux, Arno Brandhuber, Miriam Diamond, Erle Ellis, Sabine Höhler, Maya Kóvskaya, Christoph Küffer, Adrian Lahoud, Reinhold Leinfelder, Wolfgang Lucht, Tadzio Müller, Philipp Oswald, Matteo Pasquinelli, Armin Reller, Jürgen Renn, Wolfgang Schäffner, Emily Eliza Scott, Jorg Sieweke, Bryndís Snæbjörnsdóttir, Sverker Sörlin, Will Steffen, Bronislaw Szerszynski, Zev Trachtenberg, Stella Veciana, Caleb Waldorf, Jan Zalasiewicz

Team

Project Head: Katrin Klingan
Scientific Concept: Christoph Rosol
Scientific Advice, Moderation:
Roman Brinزانك
Program/Project Coordination:
Cordula Hamschmidt
Online-Concept, Dramaturgy: Janek Müller
Project Assistance: Anna Sophie Luhn,
Patricia Maurer, Carlina Rossée,
Olga Starostina
Production: Quirin Wildgen
Interns: Lina Brion, Mario Michel

ANTHROPOCENE CURRICULUM / CAMPUS IS
a part of THE ANTHROPOCENE PROJECT and
is being developed by

HKW



MAX-PLANCK-INSTITUT
FÜR WISSENSCHAFTSGESCHICHTE

In collaboration with

Deutsches Museum



Rachel
Carson
Center
Environment and Society



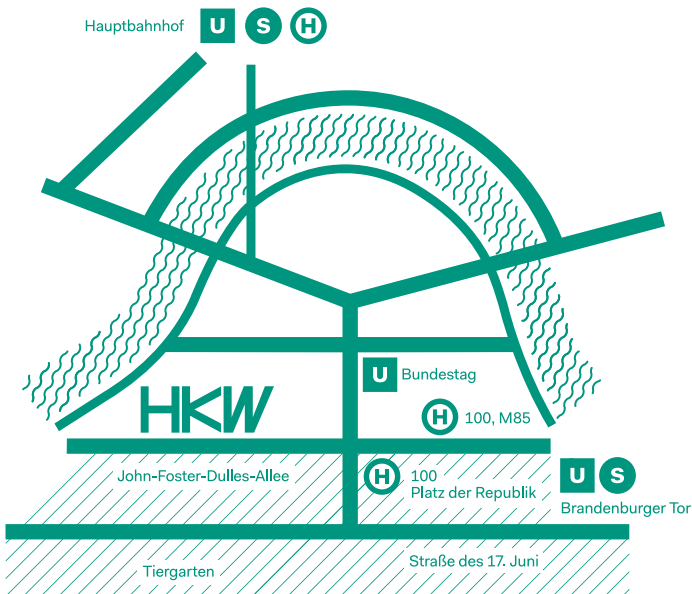
Supported by



Ein Interdisziplinäres Labor
Gefördert durch die



LEMONAID⁺



Due to construction work, John-Foster-Dulles-Allee is partially closed as of Sept. 2014.
Vehicle access to HKW remains open but parking is limited. Bus line 100 is re-routed,
please use bus stop "Platz der Republik." More info at bvg.de